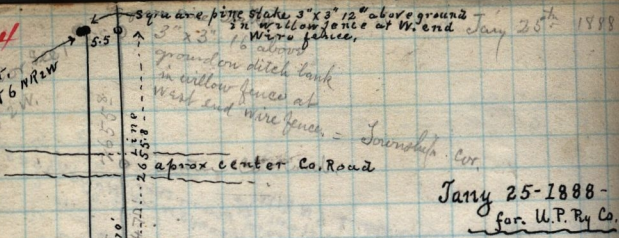


154

T6 E Cot.  
Sec 1 T6 NRW

Square pine stake 3" x 3" 12" above ground  
3" x 3" 2" W. low fence at W. end July 25<sup>th</sup> 1888  
Wire fence, 16' above ground on ditch bank  
in willow fence at West end wire fence. = Township Cor.



July 25-1888-  
for U.P. Ry Co.

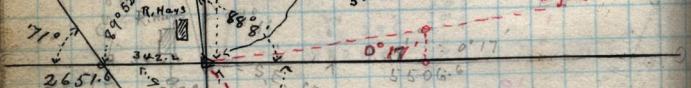
Sec. No 6 T6 NR1W

1

1/4 Sec. 11  
11

limestone quarry on lawn  
ditch

oak stake 2" diam  
16" S.W. from plum tree  
S.W. Cor. Hays' house.  
5' SE in cultivate garden.



71°  
2651.0

5506.6

12

Sec. No 6 T6 NR1W

100  
57.7  
147.1

See page  
153

Sec 7 NRW

73°36'

34.1  
13.  
32.7